

1

You're in the very beautiful Solvay Park, which Mr Solvay bequeathed to the Belgian state in 1972. Who does it belong to today?

- A The Wallonia-Brussels Federation
- B The Wallonia Region
- C The Province of Walloon Brabant

2

Who was Ernest Solvay?

- A A scientist (chemist)
- B A writer
- C A politician

3

What famous shrubs that bloom in spring are there thousands of in these grounds?

- A Lilacs
- B Rhododendrons
- C Rose trees

4

Write down the names of three amazing big trees you can see in Solvay Park.

- A -----
- B -----
- C -----

5 Which famous architect designed the hand pump close to the château's stables?

- A** Henry Van de Velde
- B** Paul Hankar
- C** Victor Horta

6 What is the tall monument that dominates the view from the back of the château?

- A** A belvedere
- B** A triumphal arch
- C** An obelisk

7 What is the name of the river that runs through Solvay Park?

- A** The Lasne
- B** The Argentine
- C** The Mazerine

8 In which century was the Château de La Hulpe built?

- A** 17th
- B** 18th
- C** 19th

9 How many statues are there around the Fondation Folon building?

- A** 7
- B** 1
- C** 30



10

Which great architect, who also designed the Galeries Saint-Hubert in Brussels, created the Château de la Hulpe farm which now houses the Fondation Folon?

- A Joseph Poelaert
- B Gustave Hansotte
- C Jean-Pierre Cluysenaar

11

What was Jean-Michel Folon's nationality?

- A Français
- B Italien
- C Belge

12

Jean-Michel Folon illustrated which famous text?

- A The Universal Declaration of Human Rights
- B The Bible
- C The Larousse dictionary

13

What technique did Folon use to produce his work *Vivre en ville*?

- A Watercolour
- B Coloured inks
- C Coloured pencils

14

Look at the little man in the stained glass window. What does his suitcase represent?

- A A bird
- B A moon
- C A star

15

For what technique did Folon use a copper plate?

- A Silk screen printing
- B Linocut
- C Etching

16

For which TV channel did Folon create animations?

- A The RTBF (in Belgium)
- B TF1 (in France)
- C Antenne 2 (in France)

17

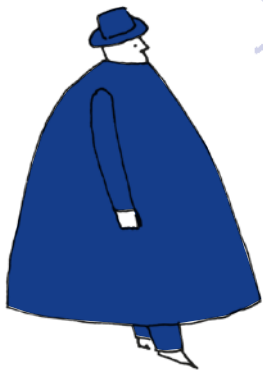
What is the title of Folon's sculpture of a man sitting on the sand?

- A L'homme et la mer (The man and the sea)
- B La mer, ce grand sculpteur (The sea, that great sculptor)
- C Évasion

18

What is the name of the (automated) person depicted under a starry sky?

- A L'homme volant (The flying man)
- B Équilibre (Balance)
- C L'envol (Taking flight)



* the magic word is the object you entered at the start of the tour and that I'm holding in my hand on the bench in the museum courtyard. Have you guessed what it is?

FONDATION
FOLON

Drève de la Ramée 6A - 1310 La Hulpe
fondationfolon.be - info@fondationfolon.be



With the support of

